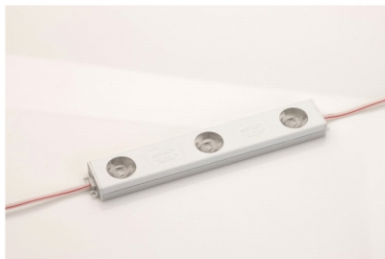


## VLEG-12VDC 6W



Shape	Lens type	Power Dissipation	6W
Current dissipation	500mA	Operating power	DC 12V

### DETAIL VIEW

- High powered SAMSUNG LED lamps
- View angle :50° x 9° & 44° upon request
- IP65 rating—prevents water & dust penetration with intergrated plastic case and silicon potting on back
- Constant current driving system for stabilized and uniform luminous flux
- Flexible chain comprising of 8 modules

## APPLICATION

Special goods for single or double sided light cabinet

Bus shelter signage, Menu boards

Text tile, Movie poster

## SPECIFICATION

Product	VLEG-12VDC 6W
Electrical / Physical	
Color	WHITE
Operating Power	DC12V
Power	6W
Weight	92g
Wire specification	UL2468(2C x Ø2.5 x 130mm)
Current dissipation	500mA
Waterproof rate	IP65
Dimension	109mm(L) x 31mm(W) x 14.6mm(H)
Connection in serial	8modules(24LED Lmaps)
Optical characteristics	
Daylight white	Min(6,000K)/Typical(6,500K)/Max(7,000K)
Neutral white	Min(3,800K)/Typical(4,000K)/Max(4,200K)
Warm white	Min(2,800K)/Typical(3,100K)/Max(3,200K)
Construction	
Lamp	High power SAMSUNG LED Lamp
Lens	PMMA
Cover	ABS
Body	AL Extrusion
PCB	FR-4
Thermal	
Operating temperature	-20°C ~80°C
Storage temperature	-20°C ~85°C
Cooling	Aluminum heatsink